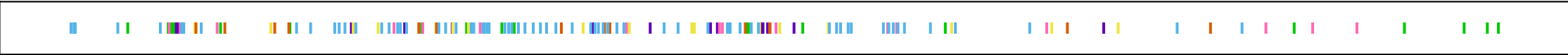
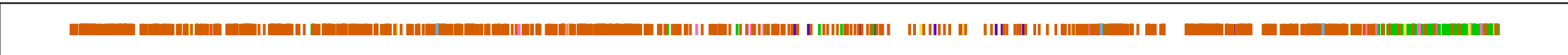


# Chromosomes in Syrphidae\_Dasysyrphus\_albostratus



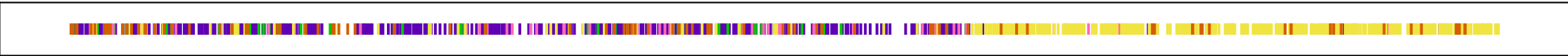
0 2 4 6 8 10 12 14

Position in X



0 50 100 150 200 250

Position in Chr1



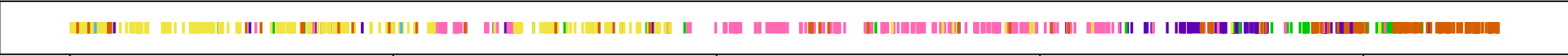
0 20 40 60 80 100 120 140 160

Position in Chr2



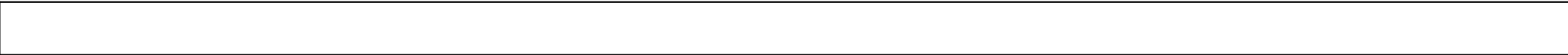
0 20 40 60 80 100 120 140

Position in Chr3



0 20 40 60 80

Position in Chr4



-0.04 -0.02 0.00 0.02 0.04

Position in MT



0.0000 0.0025 0.0050 0.0075 0.0100 0.0125 0.0150 0.0175

Position in nA

