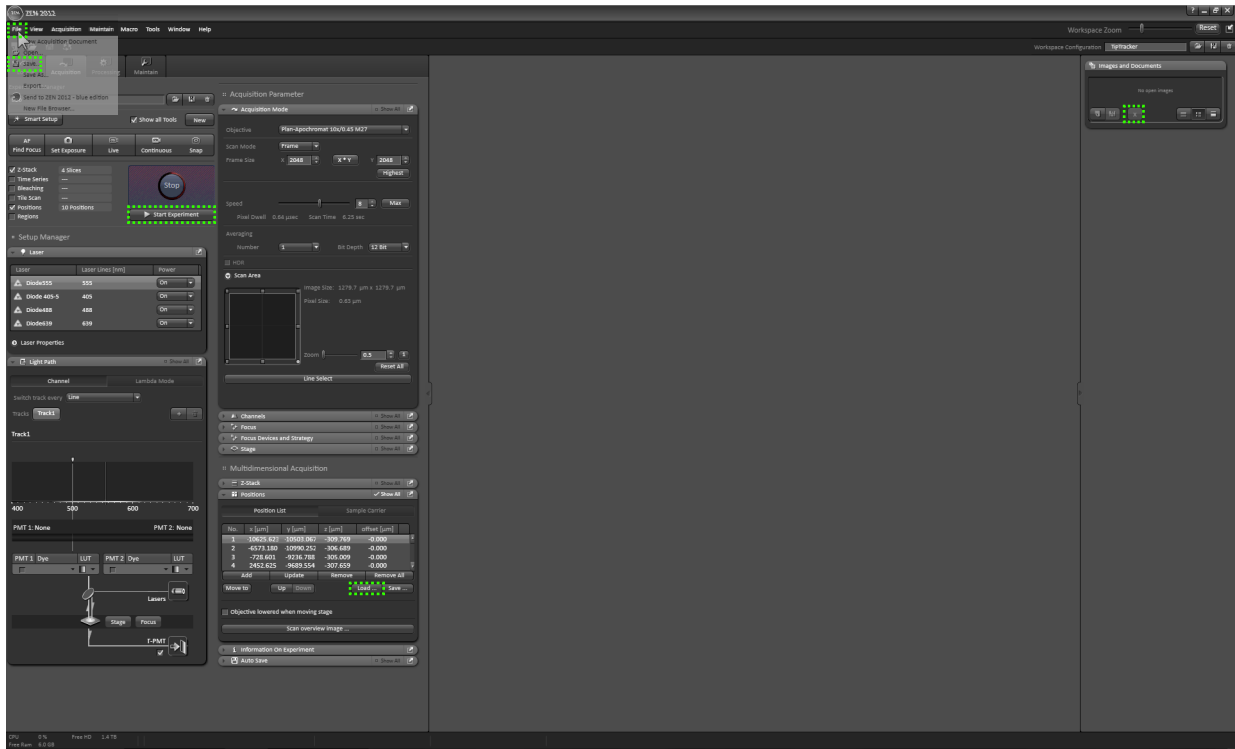


# Supplemental Figure



Screenshot of the Zen Graphical User Interface. The user has to specify screen coordinates of the buttons that are needed for loading a position list, starting the experiment and saving and closing the resulting image. These buttons are highlighted in green dashed boxes for the Zeiss Zen graphical user interface. The Autolt software will use these coordinates to interface the TipTracker with the image acquisition software.